

E & W IYC CLUB COURSES APPENDIX A



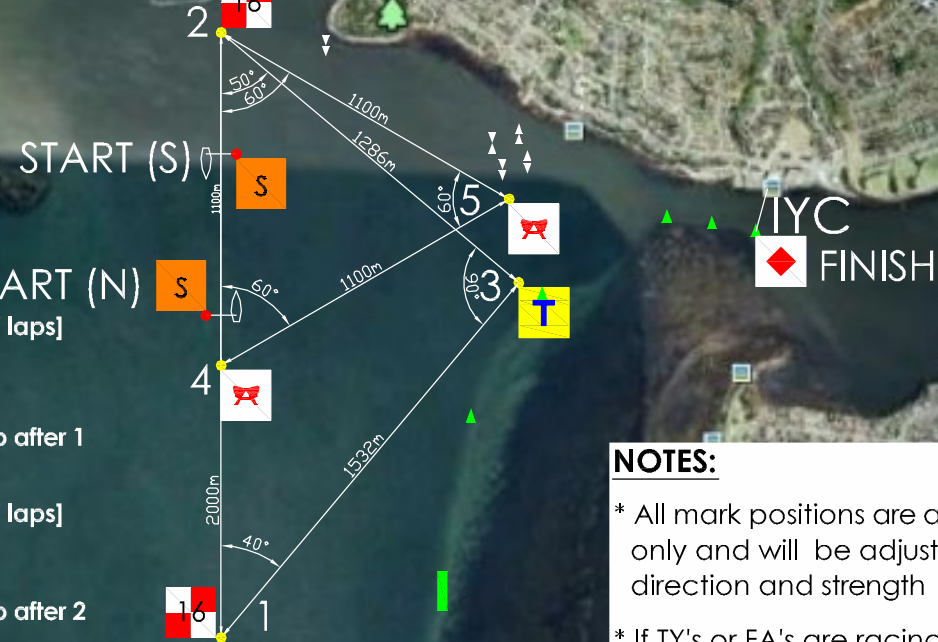
SKIFFS
E: (Stb) - Start, then 1, 2 [x # of laps] >>> Finish (5 laps ~ 20km)
W: (Port) - Start, then 2, 1 [x # of laps] >>> Finish (6 laps ~ 21.5km)
TY's
E: (stb) - Start, then 1, 3, 2, 1, 2, 1, 3, 2, 1, 2, >>> Finish (~16.5km)
W: (port) - Start, then 2, 3, 1, 2, 1, 2, 3, 1, 2, >>> Finish (~15km)
 NOTE: Division 2, ignore underlined marks
FA & OPEN
E: (Stb) - Start, then 1, 4, 5, 1, 5, 1, 4, 5 >>> Finish (~12km)
W: (Port) - Start, then 5, 4, 1, 5, 1, 5, 4, 1 >>> Finish (~10.5km)

NE & SW IYC CLUB COURSES APPENDIX A



SKIFFS
NE: (Port) - Start, then 1, 2 [x # of laps] >>> Finish (4 laps ~ 22km)
SW: (Stb) - Start, then 2, 1 [x # of laps] >>> Finish (4 laps ~ 21km)
TY's
NE: (Port) - Start, then 1, 3, 2, 1, 2, 1, 3, 2, >>> Finish (~19km)
SW: (Stb) - Start, then 2, 3, 1, 2, 1, 2, 3, 1, >>> Finish (~18km)
 NOTE: Division 2, ignore underlined marks
FA & OPEN
NE: (Port) - Start, then 1, 4, 5, 1, 5, 1, 4, 5 >>> Finish (~12.5km)
SW: (Stb) - Start, then 5, 4, 1, 5, 1, 5, 4, 1 >>> Finish (~11km)

S & N IYC CLUB COURSES APPENDIX A



SKIFFS
S: (Port) - Start, then 1, 2 [x # of laps] >>> Finish (5 laps ~ 20.5km)
 NOTE: When finishing at club, ignore the last 2 and head to club after 1
N: (Stb) - Start, then 2, 1 [x # of laps] >>> Finish (6 laps ~ 23km)
 NOTE: When finishing at club, ignore the last 1 and head to club after 2
TY's
S: (Port) - Start, then 1, 3, 2, 1, 2, 1, 3, 2, 1, >>> Finish (~18km)
N: (Stb) - Start, then 2, 3, 1, 2, 1, 2, 3, 1, 2, >>> Finish (~16.5km)
 NOTE: Division 2, ignore underlined marks
FA & OPEN
S: (Port) - Start, then 4, 5, 2, 4, 2, 4, 5, 2, 4 >>> Finish (~12km)
 NOTE: When finishing on the water, ignore the last 4
N: (Stb) - Start, then 2, 5, 4, 2, 4, 2, 5, 4, 2 >>> Finish (~12km)
 NOTE: When finishing on the water, ignore the last 2

NOTES:
 * All mark positions are approximate only and will be adjusted for wind direction and strength
 * If TY's or FA's are racing on their own, all marks may carry their class flag
 * All boats must stay on the correct side of all navigation marks (can sail on North side of reef)
 * Sprints & 1st race of 2 on same day, finish at Start line.

SE & NW IYC CLUB COURSES APPENDIX A



SKIFFS
SE: (Port) - Start, then 1, 2 [x # of laps] >>> Finish (5 laps ~ 22km)
 NOTE: When finishing at club, ignore the last 2 and head to club after 1
NW: (Stb) - Start, then 2, 1 [x # of laps] >>> Finish (5 laps ~ 22km)
 NOTE: When finishing at club, ignore the last 1 and head to club after 2
TY's
SE: (Port) - Start, then 1, 3, 2, 1, 2, 1, 3, 2, 1, >>> Finish (~17.5km)
NW: (Stb) - Start, then 2, 3, 1, 2, 1, 2, 3, 1, 2, >>> Finish (~17.5km)
 NOTE: Division 2, ignore underlined marks
FA & OPEN
SE: (Port) - Start, then 4, 5, 2, 4, 2, 4, 5, 2, 4 >>> Finish (~12km)
 NOTE: When finishing on the water, ignore the last 4
NW: (Stb) - Start, then 2, 5, 4, 2, 4, 2, 5, 4, 2 >>> Finish (~12km)
 NOTE: When finishing on the water, ignore the last 2

REVISION F
17-9-2013
 ERROR IN FA/OPEN
 E&W COURSE CORRECTED